



SIMPLE LIFE



GO GET  
YOUR FIRST  
MONTH'S  
RENT FREE!\*

*\*Available on selected  
properties for a limited  
time only*

## Empyrean, Salford, M7

£995 PCM

FIRST MONTH'S RENT FREE!\* OFFER ENDS 31st March 2024

A Striking new development of apartments in Salford, just a 20 minute walk from Manchester's Deansgate. Inspired by astronomer William Crabtree who made the area his home in the 1600s, Empyrean translates as the highest heaven – and you can call a slice of it your own!

The Crabtree is a beautiful one bed apartment named after William Crabtree, the 17th century astronomer born and bred in Salford. As you walk in the front door, you are met with a large kitchen/ diner fully fitted with appliances as well as handy store cupboard for extra space. This area leads you into the living room towards the back of the apartment. Featuring French windows that open onto your balcony, this is the perfect haven for lazy afternoons and sunsets.

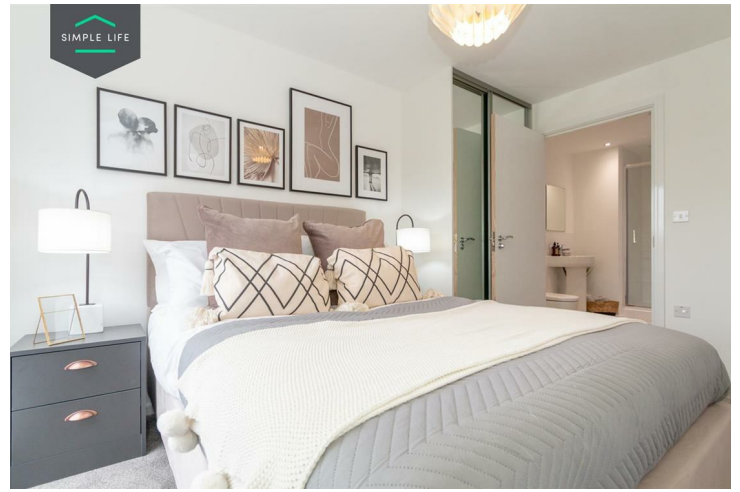
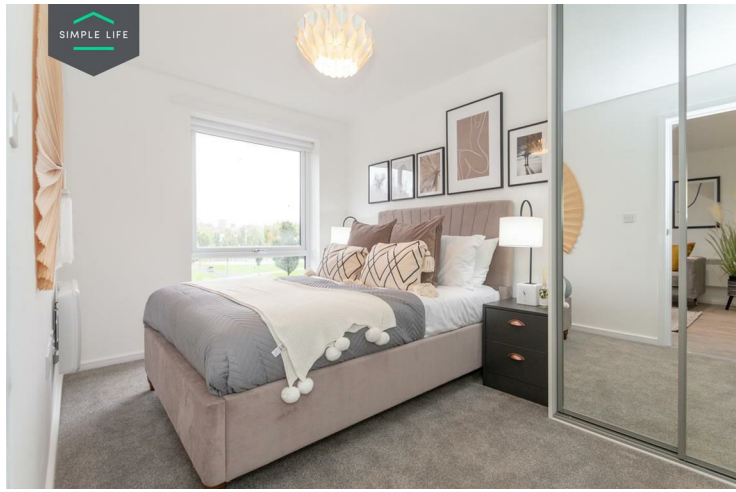
Ground floor apartments will include a Juliet balcony for extra security, whilst the upper floors benefit from larger outdoor spaces. Off the living room, you will find your bedroom with access to a stylish shower room.

Situated directly opposite Green Grosvenor Park and a stone's throw away from the river Irwell, these homes have something to offer to all. Ideal for professionals, young families or couples wanting an easy commute without the city centre pricetag.

Deposit: £995  
Tenancy Length: 12 Months  
Council Tax Band: A  
Available Now

\*Available on selected plots only. See T&Cs attached.





## Key Features

- Fitted wardrobes to main bedroom
- Fridge freezer
- Light wash wood effect flooring
- Modern, white kitchen units
- Light grey carpets in the bedrooms
- Dishwasher
- Washing/drying machine
- Dark ash style worktops
- Light wood or white interior doors
- FIRST MONTH'S RENT FREE!\*

## Location

